

# **SOLOMONOVO**

## **INDUSTRIAL PARK**

**Solomonovo, Zakarpatie Region  
Ukraine**

# Localization advantages

## Location

- > Center of Europe and the most western part of Ukraine
- > Bordering 4 EU states
- > Boarder length: Slovakia - 98,5 km, Hungary - 130 km, Poland - 33,4 km, Romania - 205,4 km
- > 19 border crossing points, including: 8 international, 3 inter regional, 5 simplified boarder crossing points

## Access to developed transport infrastructure

- > 5<sup>th</sup> international transport corridor connecting region with Budapest, Vienna, Bratislava, Prague, Trieste (65 km from autobahn)
- > Rail-transport hub in Chop connecting with Kharkov, Kyiv, Chernovtsy, Simferopol and Odessa and internationally connected with Moscow, Prague, Budapest, Bratislava, Belgrade and Roma.
- > International airport «Uzhgorod» 4 class «G»,
- > Developed own network of European-type (1435mm) and CIS-type (1520mm) railway tracks. The own terminal has 3 European-type railway lines with combined length of 1,426 meters and 1 European/CIS-type railway line.

## Other factors

- > low level of employment as well as availability of highly qualified working force



# Solomonovo industrial park at the map of the region



**Slovak Republic**

24 km  
24 km  
1,5 km



**Poland**

78 km  
350 km  
350 km

Lvivska oblast

**Zakarpattia Region**



**Solomonovo Industrial Park**

Ivano-Frankivska oblast



**Hungary**

2 km  
2 km  
2 km

Customs border



**Romania**

170 km

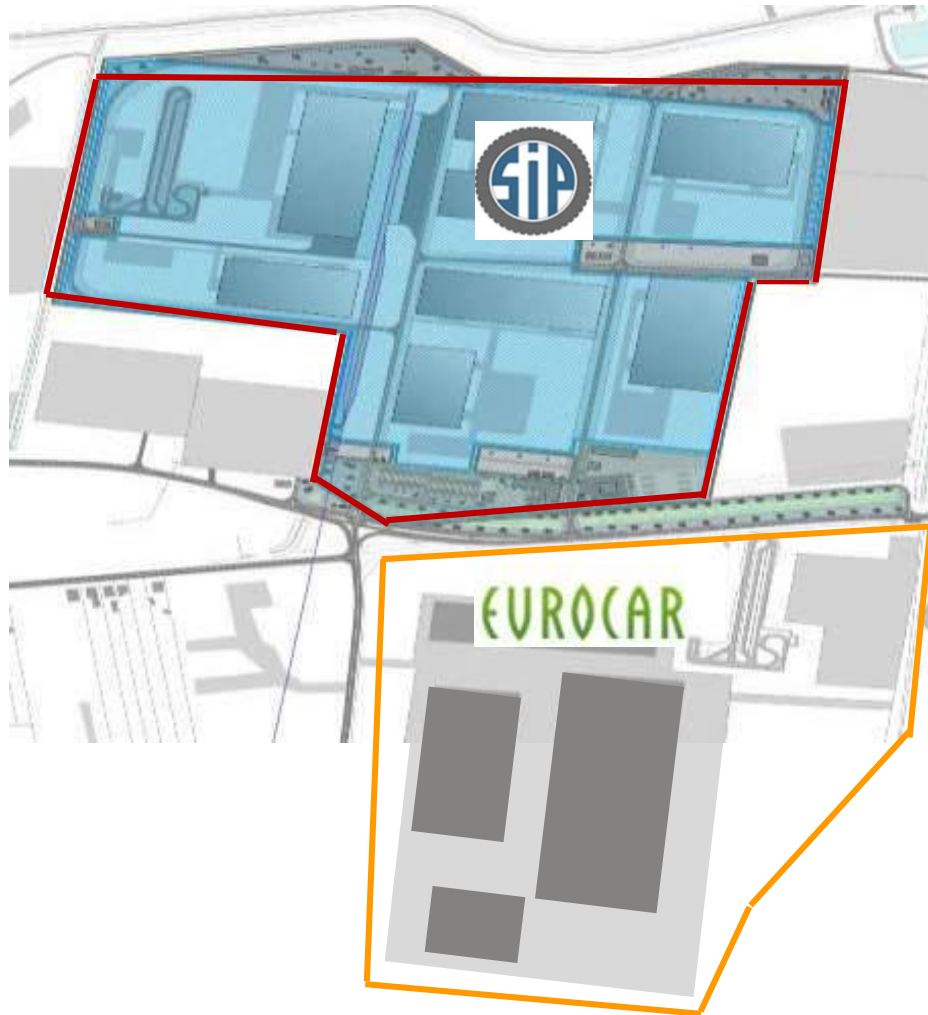
**OEMs, suppliers and manufact**

Volkswagen  
 ŠKODA  
 Audi  
 JABIL  
 YAZAKI  
 EUROCAR  
 DELPHI  
 Automotive Systems  
 Driving Tomorrow's Technology  
 HP  
 FISCHER  
 PHILIPS  
 FLEXTRONICS  
 ГРОКЛІН-КАРПАТИ  
 ТОВ





# Industrial park zoning



Undeveloped territory

**41 hectares is undeveloped territory planned for parts and components production area**

Cars production area

**Eurocar production area for producing passenger cars with overall capacity of 88.000 cars per year extendable to 130.000 cars per year, including railway infrastructure, adjacent logistics and warehouses.**

# Concept of industrial park

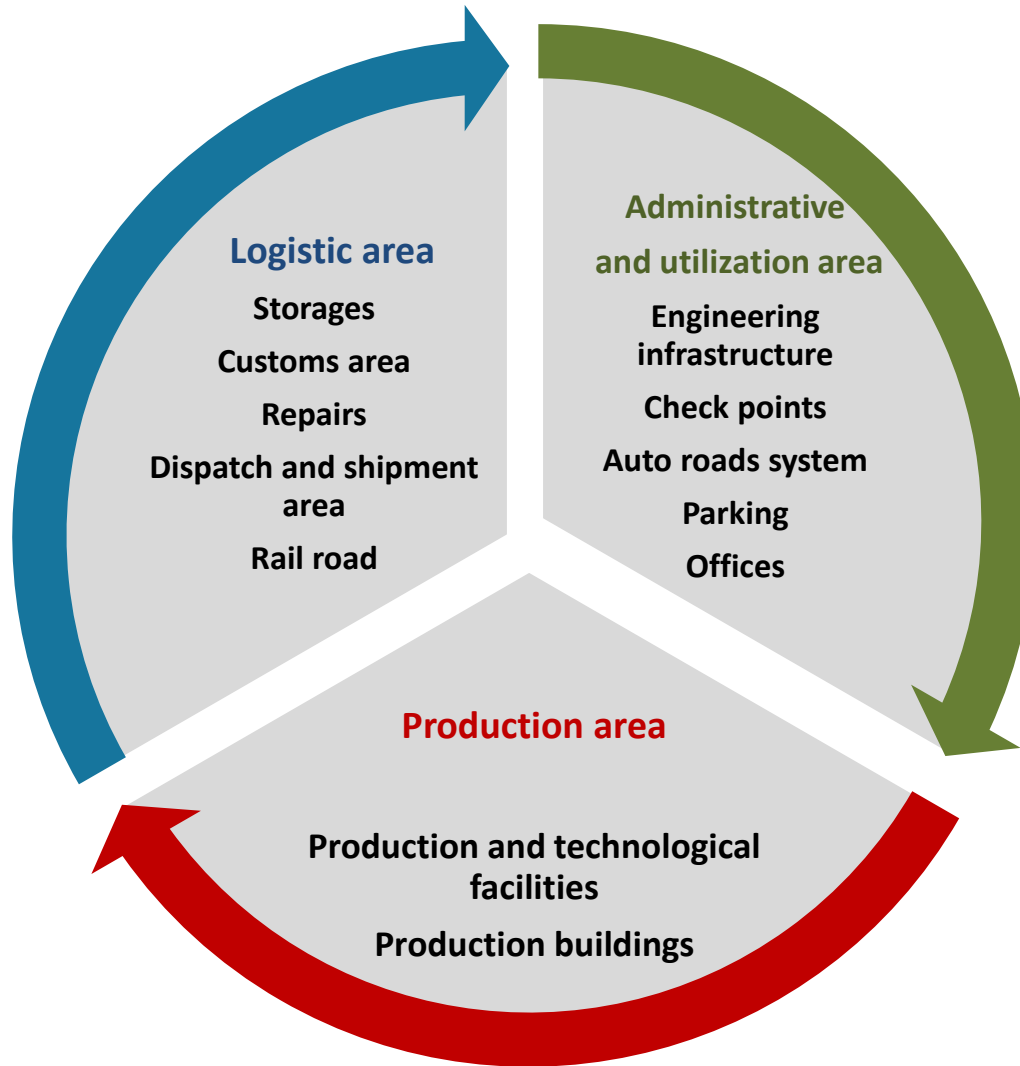


Modern industrial complex for production of automobiles and automotive parts and components

## Concept idea

Located at the area of 66,2 hectares aimed to create greenfield highly technological machine building area  
To create analog of the best world existing examples

# Industrial park structure



Production area – 38 hectares

Administrative and utilization area – 25 hectares

Logistic area - 3 hectares

Industrial park structure foresees the full range of production and its servicing by means of creating all necessary infrastructure and rendering necessary services as well as supply of resources.

All aforementioned is supposed to be effected by industrial park management company.

**On 21.06.2012 Supreme Council has adopted the Law of Ukraine “On industrial parks”**

## Preferential treatment for industrial parks residents

- › Customs duty exempt to the import of high technological equipment and its components as well as materials, which are not produced in Ukraine and imported with aim of production activities at the territory of industrial park:
  - › When importing high tech equipment
  - › When importing components for high tech equipment
  - › When importing materials not produced in UA and which are imported for production activities in the industrial park territory
- › Possibility to use the freed resources in production activity at the territory of industrial park as well as for loans repayment and other financial obligations settlement
- › Exempt from the share obligation in populated place infrastructure development of the region (from 2 up to 10% of the investment amount)
- › Fixing of the participant status at the legal level in case of park management change

Cooperation with Ukrainian State Agency for investment projects



# Possible cooperation forms and management company services

Industrial park is managed by managing company which can use different cooperation forms with industrial park participants.

## Management company services

- › Rendering of investment areas (leasing or property)
- › Connection to engineer nets and communications
- › Coordination and guiding of projects at the stage of receiving of license documents for land and construction
- › Consulting and engineering
- › Engineer and transport capacities maintenance and servicing
- › Transport and logistic services
- › Security of buildings and premises
- › Fire safety
- › Maintenance services (cleaning, utilization of waste, etc.)

## Possible cooperation forms

Turn key construction

Sale of land slots with all necessary infrastructure

Creation of joint venture

Financial leasing of real estate

All range of consulting and engineering services

## Contact information

**Managing company**  
**«Sezparkservice»**

89460, Ukraine  
Uzhgorod district, Solomonovo village  
Peremogy str. 46  
<http://sezparkservice.com/>



**Contact Address:**

88000, Ukraine, Uzhgorod  
Bozhenka srt., 2-4,  
Tel/fax: +38 (0312) 61 48 15, 61 62 95  
E-mail: [info@sezparkservice.com](mailto:info@sezparkservice.com)

**Director**

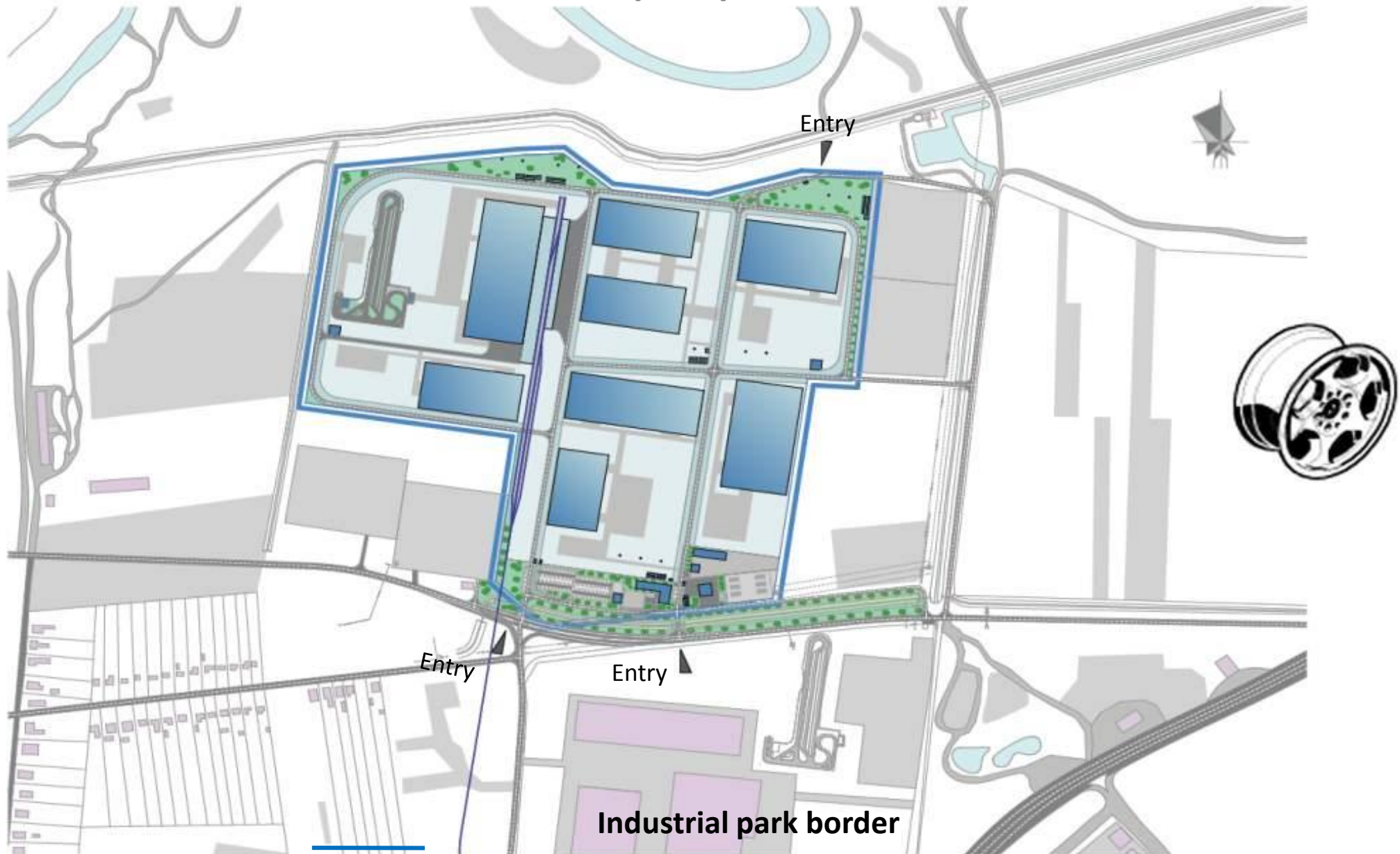
Vladimir Panov

# Location at the map of Europe



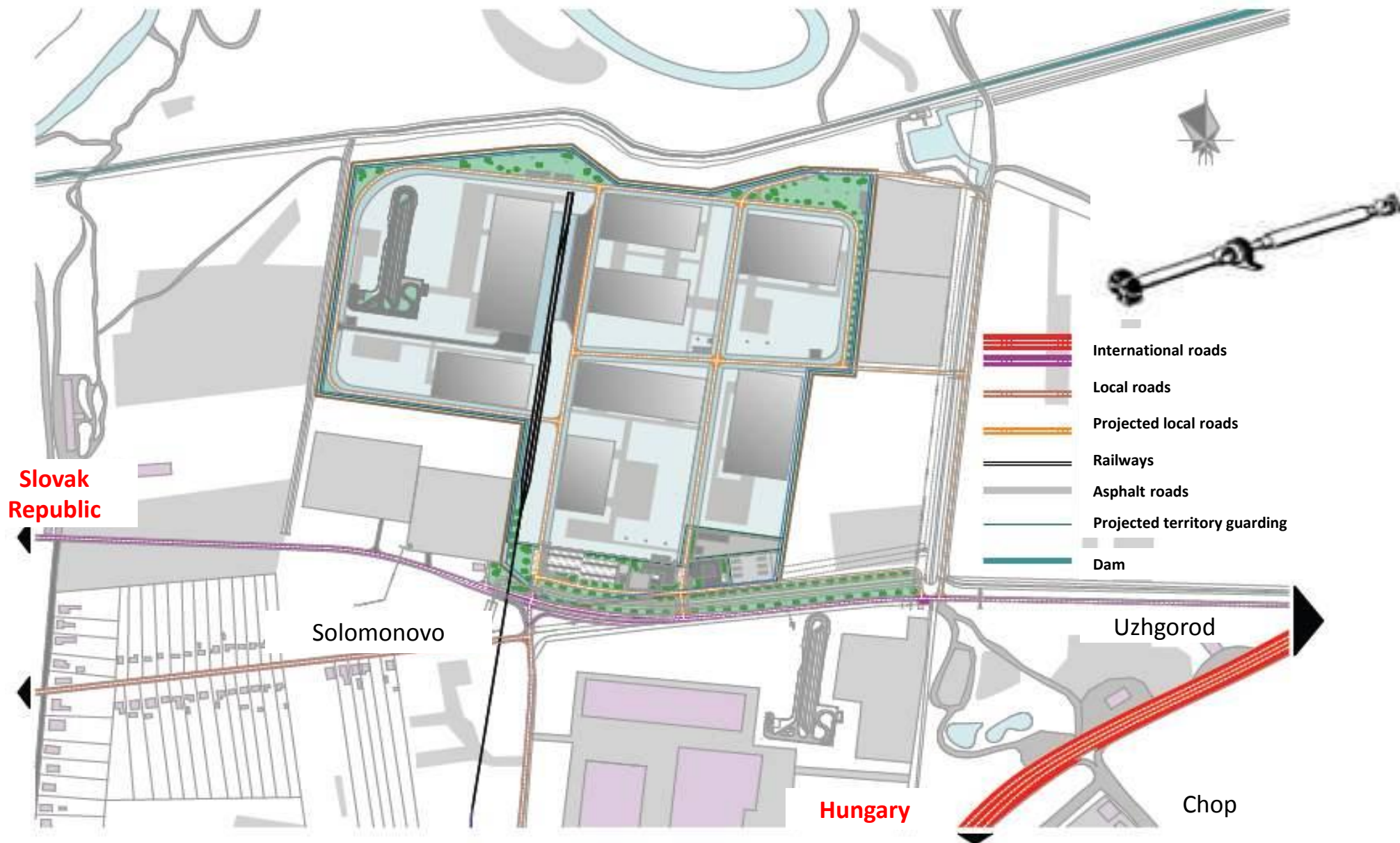


# Industrial park plan





# Transport scheme

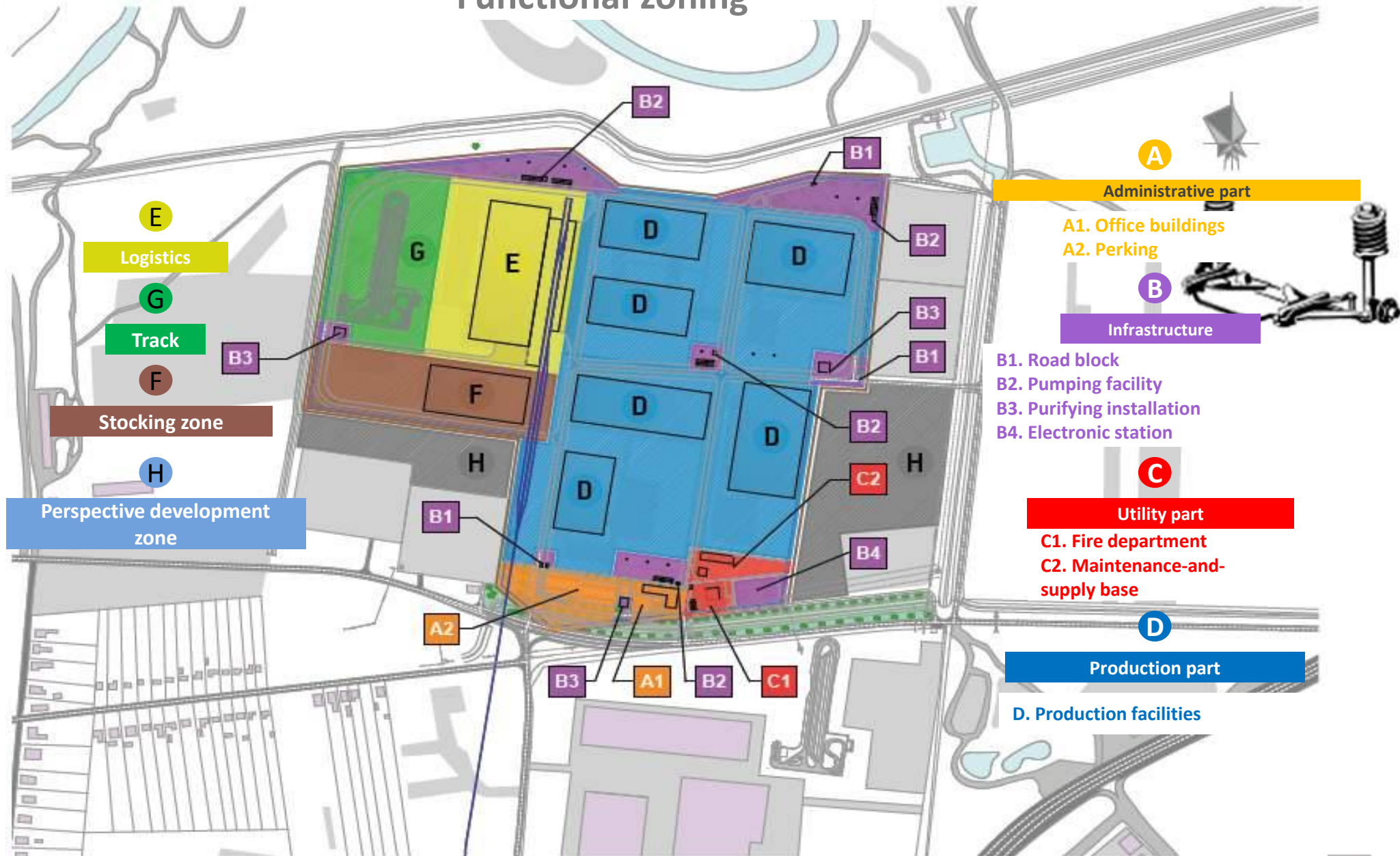


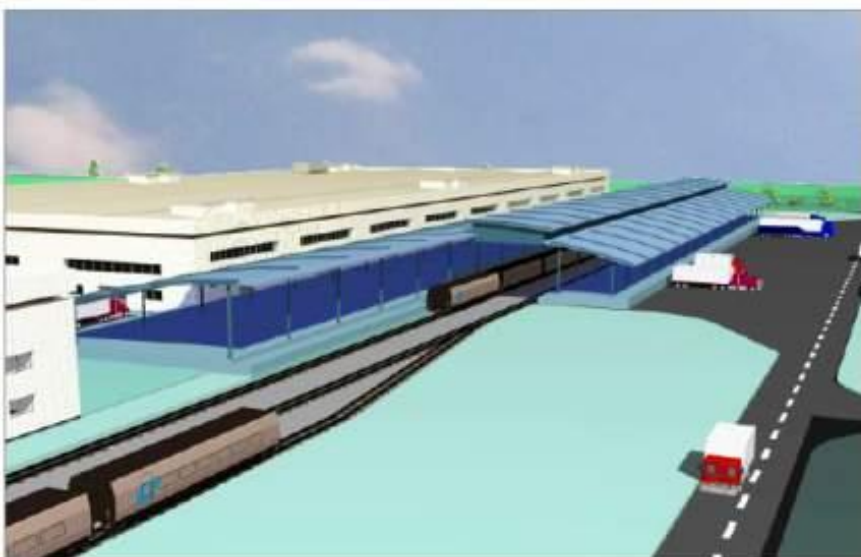
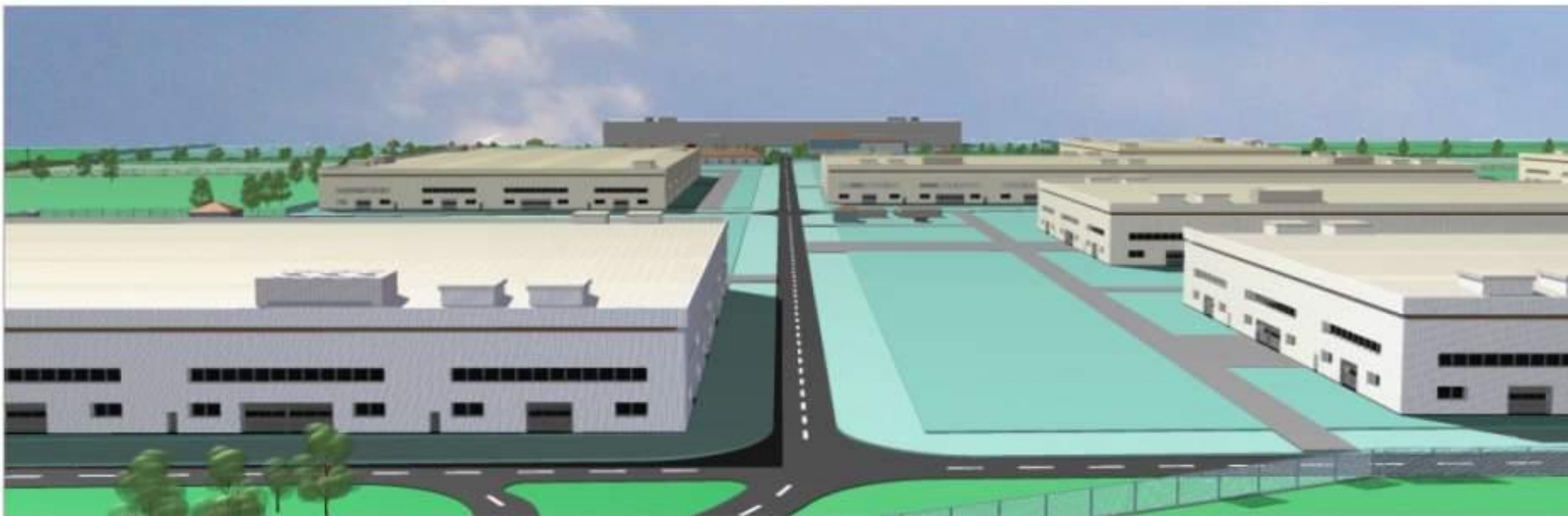
# Industrial park zoning





# Functional zoning







Thank you.

