



**EMBASSY OF THE
REPUBLIC OF MOLDOVA
Ankara**

No. TUR/231/869 of July 12, 2016

By present, the Embassy of the Republic of Moldova would like to inform You that the Moldova Investment and Export Promotion Organization (MIEPO) organizes a public tender of ideas and projects on the usage of public property, remaining after dismantling of the pavilion of the Republic of Moldova at the World Expo "Milan 2015". The main purpose of the tender is to choose the most interesting idea or project for an efficient use of assets, remaining after Moldova's participation in the above-mentioned Word Expo.

The pavilion is a large glass cube seen as a sculpture of graceful shape and durability. The choice of materials and simple architecture of the Moldovan pavilion reflects the concern for the environment, resource use and ability to re-use the pavilion after its demolition. Surface of the pavilion built was 305 sqm, including: ground floor of 202 sqm and the floor of 103 sqm, as well as the land related to the installation in the Expo was 747 square meters.

In this regards, the Embassy kindly asks the Esteemed Union of Chambers and Commodity Exchanges of Turkey assistance in disseminating the information about the tender among its members. The detailed information and the tender book are attached (*as mentioned, 19 pages*).

Respectfully,

Vasile CHITII
Charge d'Affairs a.i.

**TO MR. RİFAT HİSARCIKLIOĞLU,
PPRESIDENT OF THE UNION OF CHAMBERS
AND COMMODITY EXCHANGES OF TURKEY**

TENDER BOOK

on the way of holding the tender of ideas and projects for the use of the property remaining after the closing of the World Expo "Milan-2015"

The Moldova Investment and Export Promotion Organization (MIEPO) organizes the tender of ideas and projects on the usage of public property, remaining after the dismantling of the pavilion of the Republic of Moldova at the World Expo "Milan 2015".

The purpose of the tender is to choose the most interesting idea or project for an efficient use of assets, remaining after Moldova's participation in the World Expo "Milan-2015".

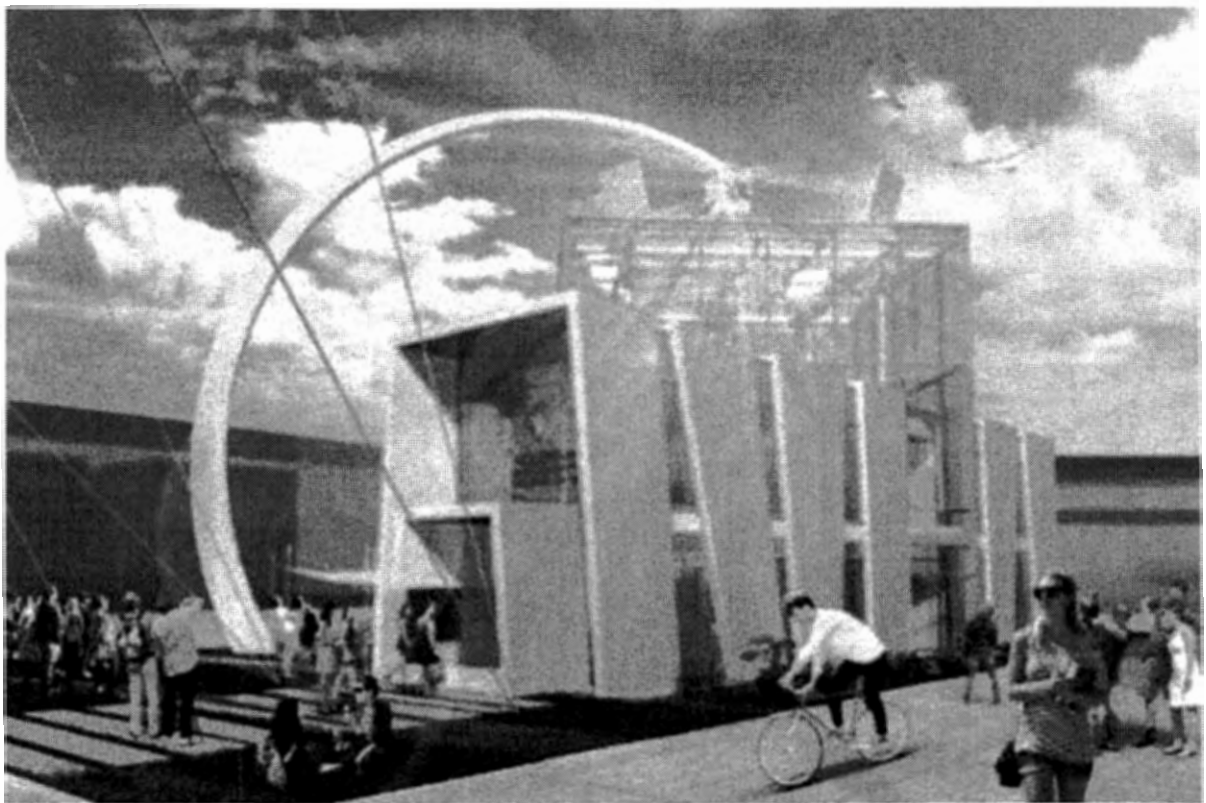
During the period of 1st of May to 31st of October, 2015, the Republic of Moldova participated for the first time with its own pavilion at the World Expo "Milan 2015", held in Milan (Italy Republic). World Expo is the largest international exhibition, which is held every five years. The official slogan of Moldova at the Expo was "Let the Light Shine" - Energy of the Sun, Energy of the Earth, Food for People.

Simple architecture of the pavilion is presented by a glass cube made from basic materials - to encourage people for using simple materials, when creating something, without wasting large volumes and without causing environmental damage.

The key idea of the Moldovan pavilion architecture is that it is, first of all, simple, clean, sustainable and attractive to the public. The pavilion is a large glass cube seen as a sculpture of graceful shape and durability.

The choice of materials and simple architecture of the Moldovan pavilion reflects the concern for the environment, resource use and ability to re-use the pavilion after its demolition and transportation to another location with further rebuilding using blocks and parts left after the demolition. Technical data of the pavilion are shown in Annex 3 to this Tender Book.

Surface of the pavilion built was 305 sqm, including: ground floor of 202 sqm and the floor of 103 sqm, as well as the land related to the installation in the Expo was 747 square meters (which included land planning, engineering networks, construction foundations - "sun flower" and the pavilion).



I. GENERAL PROVISIONS

1. The Committee for the management of the assets, remained after the participation of the Republic of Moldova in the World Expo "Milano – 2015", established through the Government Decision no. 865 dated 18.12.2015 (further - Tender Committee), ANNOUNCES the opening of the tender of ideas and projects on the use of the property, remained after the closing of the World Expo "Milan 2015".
2. The Tender Book on the way of holding the tender of the ideas and projects for the use of the property, remained after the closing of the World Expo "Milan 2015" (further –Tender Book) establishes the conditions for the organization, participation and conduction of the tender, as well as the evaluation conditions of the ideas and projects submitted.
3. The tender is organized in order to select the most appropriate project idea on the use of the property, remained after the closing of the World Expo "Milan 2015" (investment project/goods procurement) that is to be implemented for this idea, according to the principles of legality, transparency, confidentiality and accessibility to information.
4. The tender participants are obliged to respect the terms and the conditions of the Tender Book. The Tender Book submitted shall be made public on the website of *the Ministry of Economy, MIEPO, the Agency of Public Property, Civic.md, etc.* The Participant, which calls on clarifications on the tender documentation, should contact the Moldova Investment and Export Promotion Organization, in written, at the address specified in the announcement published on the websites mentioned. The Moldova Investment and Export Promotion Organization (MIEPO) will reply in writing to any request for clarification, before the deadline for proposals submission.

II. TENDER COMMITTEE

5. Will ensure, through the Moldova Investment and Export Promotion Organization (MIEPO), the implementation of the measures on organization and holding of the tender for the ideas and projects for the use of the property, remaining after the closing of the World Expo "Milan-2015".

6. Examination of applications and proposals of ideas and projects will be carried out by the Tender Committee, while as the Tender Committee hearing results will be recorded in the minutes and signed by all members present (6 + 1 members present).

III. DUTIES OF THE TENDER COMMITTEE, ITS RIGHTS AND OBLIGATIONS

7. The Tender Committee shall have the following duties:

- a. examining of applications, ideas proposals and projects;
- b. attracting, if necessary, of experts in the field for the examination of the project ideas, as well as the projects for the idea implementation;
- c. carrying out of the tender;
- d. designation of the contest winner;
- e. examination of appeals on the results of the tender.

8. The Tender Committee is entitled to:

- a. prolong the term for organizing the tender for a maximum of 3 times by 10 days;
- b. negotiate directly the amount and form of the investment;
- c. request from the tender participant additional information on data about the company and the investment draft submitted.

9. The obligations of the Tender Committee and its members:

- a. examination of applications and sets of materials received;
- b. checking and evaluation of the tender participation documentation and the participants' data;
- c. preserving the confidentiality of the data from the tender documents;
- d. taking part in the Tender Committee meetings;
- e. signing within 5 working days the minutes on the results of the tender or to annex their separate opinion.

10. The Tender Committee President shall have the following duties:

- a. directs the activity of the Tender Committee;
- b. sets the date, place and time for gathering the Committee meetings;
- c. chairs the meetings of the Tender Committee.

11. Tender Committee Secretary shall have the following duties:

- a. prepares the documents necessary for carrying the tender;
- b. makes available to the tender participants the required information, explaining how to fill out the necessary documents;
- c. receives and registers the applicants requests;
- d. informs the members of the Tender Committee about the date, time and place of the meeting, and its agenda;
- e. insures the maintenance of the tender materials;
- f. informs in writing the tender participants about the results or about the cancellation of the results thereof;
- g. keeps the Register of the Contest Committee;
- h. prepares the minutes of meetings.

IV. QUALIFICATION OF THE TENDER PARTICIPANTS

12. The tender participants can be:

- a) a natural person;
- b) a legal person (public or private, resident or non-resident);
- c) an association of legal entities and/or individuals, established under an agreement of intent to participate in the tender.

13. The candidates, allowed to take part in the tender, should implement the following conditions:

- a. submission, within 30 days from the publication of the announcement and this Tender Book, of the request for participation in the tender in accordance with Annex no. 1 to this Tender Book/offer to purchase goods and submission of the documents for participation in the tender;
- b. presentation of the ideas that fit for the tender.

14. The candidates are not allowed to take part in the tender, if:

- a. the insolvency proceedings was initiated on them;
- b. they are among the ones mentioned in p. 12, who have debts on taxes, tolls and other payments due to the public budget that exceed a fiscal period;
- c. provide false information in the documents submitted;
- d. they have not fully submitted the required set of documents or their issuance does not comply with the requirements established;
- e. they are members of the Tender Committee.

15. Participants in the tender are entitled to:

- a. take part in the tender personally or through their authorized representatives;
- b. associate for the purpose of submitting joint project ideas. The decision on association should be submitted in written form.
- c. receive from the Secretary of the Tender Committee additional information on the procedure for the submission of their requests to participate in the tender, conditions and procedure of the tender conduction, general information about the technical design of the pavilion, the manner of issuing the request for participation;
- d. to submit for the tender more ideas and ways of their implementation;
- e. to address to the Tender Committee, in case of its rights infringement as a participant in the tender, as well as the violations of this Tender Book;
- f. to inform about the results of the tender, as well as about other considerations of the decisions taken;
- g. dispute the results of the tender.

16. Participants of the tender must:

- a. respect the rules of the tender, provided for by the present Tender Book;
- b. in the case when the tender winner will be designated, sign within 5 days working days the contract for implementing the idea. The denial by the winner to sign the contract shall constitute sufficient grounds for cancellation of the tender winning. In this case, the Tender Committee may award the contract to the following participant with the most advantageous offer, the proposal of which complies with the requirements, and which is assessed by the Tender Committee qualified for the project implementation.

17. The set of documents for participation in the tender, addressed to the Tender Committee, should contain:

- a. request for the tender participation, addressed the Tender Committee, according to Annex no. 1 to this Tender Book;
- b. in the case of legal persons – a copy of their certificate of State registration and a copy of the Statute, authenticated by their heads and the extract from the State Register of Legal Entities;
- c. in the case of individuals – a copy of the ID card and the annex to it;
- d. attesting certificates on the fulfillment of payment obligations due of taxes towards the state (according to the types of forms, issued by the competent authorities);
- e. the entry form according to the Annex no. 2 or the economical offer for goods purchasing;
- f. in the case of legal persons, registered in the Republic of Moldova - Financial Report for the past year;
- g. the idea proposal for the project implementation with its description;
- h. bank declaration, which confirms the participant's financial capacity to cover at least 10% of the expenses, relating to investment project implementation;
- i. the proxy of the authorized person to act in the name of the tender participant and to sign legal documents, as appropriate.

18. Idea proposal for the implementation of the project and the investment project, which should contain:

1. general information on the project (description of the investment, technical data of the investment, implementation deadline and the main phases, relevance versus the documents on governmental and sectoral politics, expected social benefits, environmental impact);
2. financing plan (estimated investment costs, rescheduling based on the implementation schedule, cost-benefit and cost-efficiency analysis, recurring costs, financial capacity);
3. drawings (general, location, special plans);
4. other information, relevant to the proposed project.

19. The proposals should be submitted to the Secretary of the Tender Committee either in the state language, or in Russian/English language, in a sealed envelope, to the address, indicated in the press release.

20. The proposals are registered, in order of their receipt, in the register of the Tender Committee, with the date and time of receipt indicated.

21. Participants may submit the proposals via postal services or personally. The proposals shall be presented in sealed envelopes, marked properly.

22. The proposals received and registered after the deadline, indicated in the press release, published in the media, are not allowed for the tender, and shall be returned without being opened. The Tender Committee shall not take into account any proposal, submitted after the deadline for submission of proposals. Any tender, received by the Tender Committee after the deadline for the proposals submission, will be registered as appropriate and returned without being opened, with a record made on that in the minutes.

23. The participants, admitted for the tender are mailed a notification in written on their request acceptance, with the indication of the data of its registration.

24. The maximum implementation period of the idea/investment project will amount to no more than 24 months.

V. CONDITIONS AND METHOD OF THE TENDER CONDUCTION

25. The opening of the envelopes with the proposals of the ideas and investment projects are performed by the Tender Committee in the presence of the participants or their authorized persons, at the beginning of the tender.

26. On opening the envelopes, the Tender Committee checks the documents submitted and participants' data, issuing the report on their admission to the tender.

27. Tender committee verifies the compliance of the set of documents for the tender participation submitted with the requirements of the tender documentation. In the case these do not comply with the requirements of the tender documentation and the correction of errors or deficiencies found substantially changes the essence of the proposal, it will not be considered at the designation of the tender winner, which shall be recorded in the minutes of the Tender Committee meeting.

28. During the tender period, the Tender Committee has the right, if necessary, to request from the tender participants submission of additional information, relevant to the idea and the project.

29. After the registration, the tender participants do not have the right to introduce on their own any changes in the documents submitted.

30. The Tender committee, within the period before the designation of the tender winner, may exclude from the tender participation, the candidate, who submitted incorrect information in the set of the tender documentation.

VI. SELECTION CRITERIA

31. Tender committee examines the proposals of the ideas and projects/economic offer for goods purchasing, submitted within 10 working days from date of the deadline expiration for the

reception and recording of the ideas proposals, stated in the press release on the organization of the tender.

32. Projects on the goods purchasing will be evaluated based on "the most economically advantageous offer". The Tender committee reserves the right to negotiate the purchase price of goods in order to obtain an affordable price.

33. Projects on the ideas proposals and their implementation will be evaluated according to the following criteria:

No. o.n.	Evaluation criterias	The score given
1.	Public benefit and the impact of implementing the idea / investment project Starting from the assumption that for the construction of the pavilion at the World Expo "Milano – 2015" which was held in Milan, the Republic of Italy, were used funds from the state budget, the intended future use of the pavilion should correspond primarily to the criterion "public use" and namely the reconstructed pavilion will host a project that could be benefited from by a substantial number of people (beneficiaries, the impact of the project, the number of jobs created, promotion of the image of the Republic of Moldova etc)	35%
2.	Socio-economic importance of the project for the development of the Republic of Moldova/bilateral cooperation	25%
3.	Accessibility to the public The proposed project must be located in an easily accessible public area (location of the pavilion, the availability to the general public)	15%
4.	Implementation capacity An important component in the decision on further use of the pavilion will be the ability of the entity that will benefit from this building to contribute financially to its reconstruction (financial capacity, the volume of the investment, with which it will contribute, technical capacity, the period of project implementation etc.)	25%
	Total:	100

34. Selecting the winner shall be performed by the Tender Committee, in accordance with the tender conditions.

35. The tender winner shall be recognized the participant, which has accumulated the most points or has submitted the most economically advantageous offer.

36. The results of the meeting of the Tender Committee shall be recorded in the minutes.

37. The tender participants will be informed about the tender results within 5 calendar days from the date of the Tender Committee decision.

38. Tender results will be published on the official website of the Ministry of Economy and MIEPO.

Annexes:

1. *The application for participation in the tender, addressed to the Tender Committee (Annex 1)*
2. *Application Form (Annex 2)*

3. ***Technical data (Annex 3)***
4. *Project of the Pavilion execution (Annex 5)*
5. *List of construction materials that will be brought into the country (Annex 4)*

TENDERER

(name, surname, first name)

APPLICATION FOR PARTICIPATION

By _____

Following the call for participation, appeared in _____
dated _____ on the organization of the tender of
(day, month, year)

ideas for the use of the property, remaining after the closing of the World Expo "Milan-2015"

The undersigned _____
(name, name of the participant)

submit the following:

1. Sealed and visibly marked package, containing:

- a) _____
- b) _____
- c) _____
- d) _____

Completion date " ____ " _____ 20 ____

Tenderer _____
(signature)

APPLICATION FORM**NAME AND CONTACT DATA OF THE APPLICANT:**

Organization/company:

Postal address:

Phone:

Fax:

Electronic address:

Name of the person authorized to apply:

BRIEF DESCRIPTION OF THE IDEA/PROPOSAL OF PROCUREMENT OF PROPERTY, LEFT AFTER CLOSING OF THE WORLD EXPO "MILANO-2015"

(insert text into this box of max. one page, containing a brief description of the idea, purpose and its implementation.)

Description of project components

(Describe the components of the project, noting site of the building, the deadline for the project implementation, the project management mode, the number of jobs created, the scope and area of activity, the tools used in the project implementation, etc.)

Presentation of project beneficiaries

Describe the categories of the project beneficiaries, their quantity, the percentage of beneficiaries in total number of inhabitants of the location/region, and the complexity/diversity of the beneficiaries.

Project impact

Describe the economic, social impact of the initiative, existence of a problem solved or behavior change of the beneficiaries, etc.

We confirm on oath the truthfulness of the data submitted.

Signature, date

TECHNICAL DATA:

The area of the pavilion consists of:

- Land area of 747 sqm for the pavilion placement - (which includes the land arrangement, engineering networks, construction foundations – “solar flower” and the pavilion). The works on the land arrangement, engineering networks, construction foundations – “solar flower” and the pavilion will be insured by the tender winner.
- The building area of 305 sqm, which includes: ground floor of 202 qm and floor of 103 sqm.

The tender participant is to calculate and cover costs for obtaining authorizations, permits, licenses and approvals required under Moldovan law, for the construction of the Pavilion of the Republic of Moldova.

Value of construction materials to be brought into the country - approx. 20 100 000,00 lei (see Annex).

List of construction materials to be brought into the country

A. INTERNAL LOW VOLTAGE NETWORKS

№	Works and expenses	M.U.	Amount
1	Reception apparatus: Devices "IIC" for receiving and control, and alarm signaling. Concentrator: basic block for eight rays	pcs	1
2	Communication devices (dispatcher and directors telecommunications switches): Installed separately: convert or supply unit (power supply unit)	pcs	1
3	Stationary lead-acid battery, type: C-1, CK-1	pcs	1
4	"Fire" plate	pcs	1
5	Reception apparatus: Devices "IIC" of receiving and control, actuators. Concentrator: linear block	pcs	0.2
6	Reception apparatus: Device "OIIIC" 5 rays	pcs	1
7	Medium wave transmitter speakerphone, capacity kW up to: 5 (for the ceiling)	set	11
8	Medium wave transmitter speaker, capacity kW up to: 5 (for the walls)	set	12
9	Telecommunication call point for park, exterior: combined with the speaker	set	3
10	Table apparatus: Monitor	pcs	3
11	Table apparatus: Computer	pcs	1
12	Table apparatus: UPS uninterruptible power supply	pcs	1
13	Color television apparatus: Shelves for videocontrol devices, quantity "BKY", up to: 9	pcs	1
14	Reception apparatus: Intermediate devices for number of rays: 16	pcs	1
15	Color television apparatus: videocontrol device (rooms)	pcs	12
16	Color television apparatus: telecommunications and control cabinet	pcs	1
17	Devices installed on metal constructions, cabinets and desks: device, table, kg, up to: 5	pcs	10
18	Table apparatus: WiFi router	pcs	2
19	Signaling device for eight rays	pcs	1
20	Backup power supply 12W	pcs	1
21	12W battery, 17A/h	pcs	1
22	Battery Box	pcs	1
23	"Fire" plate	pcs	1
24	Electromagnetic lock	pcs	2
25	Voicemail device	pcs	1
26	Point of external calls	pcs	3
27	Dynamic microphone	pcs	1
28	Monitor	pcs	3
29	Computer	pcs	1
30	Uninterruptible power supply UPS	pcs	1
31	Video receiver for 16 channels	pcs	1
32	Outdoor network camera, matrix 1/4 "	pcs	6
33	IP video camera 1/4 " with varifocal lens	pcs	6
34	Telecommunications cabinet, installed on the floor, 22 U, with a fan	pcs	1
35	Patch panel 19 ", UTR, 16xRJ45, cat. 5e	pcs	1
36	Perforated shelves, width - 600 mm	pcs	1
37	Universal cable organaizer with 5 rings E44 ORG1U	pcs	2
38	Network switch GEMBIRD NS-2G 26PR-10/100 / 1000M 24UTP	pcs	1
39	Frame 19" for fixing the 9 skirtings	pcs	1
40	Disconnection module (plint) for 10 walls, KRONE	pcs	1
41	Uninterruptible power supply UPS 19 "3000VA / 2700W	pcs	1
42	WiFi Router	pcs	2

B. SUPPLY OF WATER AND WASTEWATER

No.	Works and expenses	M.U.	Amount
1	Safety valve with lever and counterweight, for connection with flanges, with diameter of 50 mm	pcs	2
2	Manual fire trunks PC-50	pcs	3
3	Suction valve with threaded socket for suction pipes with the nominal diameter of 1-2"	pcs	9
4	Suction valve with threaded socket for suction pipes with the nominal diameter of 1-2"	pcs	3
5	Suction valve with threaded socket for suction pipes with the nominal diameter of 1-2"	pcs	3
6	Chemical foam fire extinguisher, with air OP-5	pcs	3
7	Indicator	pcs	3
8	Mixer with rocker mixers arm for lavatory or washer, whatever the closure, including for the handicapped, having a diameter of 1/2"(for lavatory)	pcs	7
9	Mixer with rocker mixers arm for lavatory or washer, whatever the closure, including for the handicapped, having a diameter of 1/2" (for washer)	pcs	3
10	Bath mixer, with a flexible or fixed shower, irrespective of the closure, including for the disabled, mounted on the walls of brick or b.c.a	pcs	2
11	Toilet bowl, fully equipped, made of semiporcelain, sanitary porcelain, etc. including for the disabled, sitting on floor, with water tank mounted at the height or medium height, with interior type S siphon	pcs	5
12	Semiporcelain washbasin, sanitary porcelain, etc. including for the handicapped, with the plastic drain pipe, mounted on brackets fixed to walls of brick or b.c.a.	pcs	7
13	Enameled cast iron shower tub, enameled sheet, polymetacryl etc.	pcs	2
14	Polypropylene washer siphon, with the exit diameter of 50 mm.	pcs	3
15	Polypropylene shower tub siphone, with the exit diameter of 50 mm.	pcs	2

C. HEATING AND VENTILATION, CONDITIONING

No.	Works and expenses	M.U.	Amount
1	Ventilation grids ready-made Mandik VNM 2 1025x325 / UR	pcs	8
2	Ventilation grids ready-made Mandik SMPM 12.5 1225x75 / UR2	pcs	14
3	Ventilation grids ready-made Mandik SMPM 12.5 1025x75 / UR2	pcs	2
4	Ventilation grids ready-made Mandik SMPM 12.5 225x75 / UR2	pcs	1
5	Ventilation grids ready-made Mandik SMPM 12.5 325x75 / UR2	pcs	2
6	The control damper, butterfly, mounted on rectangular channels, type CFR-I, II CFR, with the perimeter of 1000 - 1600 mm	pcs	6
7	Control throttle, 1000x400 RKTm	pcs	1
8	Control throttle, 600x250 RKTm	pcs	1
9	Control throttle, 400x150 RKTm	pcs	1
10	Control throttle, 300x150 RKTm	pcs	1
11	Control throttle, RKTm Du500	pcs	2
12	Frame with fixed blinds, ready made with perimeter of 800 - 2500 mm, mounted on canal	pcs	30
13	Anemostat, Mandik VAPM 315 K / D	pcs	4
14	Anemostat, Mandik VAPM 250 K / D	pcs	10
15	Anemostat, Mandik DDM 250 S	pcs	4
16	Anemostat, Mandik TVPM 125	pcs	8
17	The circulation pump (recirculation) mounted on existing pipe, through flanges – xxx kW	pcs	1
18	Floor-mounted vertical boiler, boiler having capacity of up to 300 liters, inclusive	pcs	1
19	Air treatment unit (heat pump) - 8000/8000 m3/h Mandik	set	1

20	Heat exchanger with plates Heatex -xxx kW - 1 pc (included in US-ki)	set	1
21	Water Heater Mandik	set	1
22	Freon cooling radiator No.1 (condenser) Mandik	set	1
2. 3	Freon cooling radiator No.1 (evaporator) Mandik	set	1
24	Supply and exhaust fan Siemens-8000/8000 m3/h, respectively 500/500 Pa Available static pressure - 2 pieces	set	2
25	0.9 mm galvanized steel housing, external performance, insulation - 50mm of mineral wool	set	1
26	Siemens electric motors - xxx / xxx kW, 380 V are equipped with frequency converters INVERTEK (England) - 2 pieces	set	2
27	Automatic installation Mandik - Siemens processor with an additional screen for remote control	set	2
28	Temperature sensor (Siemens) rooms, the outside air, clean air, water - 4 pieces	set	4
29	Flaps (Belimo), exhaust air, heat recovery, recirculation chamber, bypass room fan - 6 pieces	set	6
30	Pressure sensors to monitor the fans, filters Siemens - 6 pieces	set	6
31	Filtration section (pocket filter G5) for the supply and exhaust of air - 2 units	set	2
32	Automation of heat exchangers - three way tap with servo Belimo- 2 pieces	set	2
33	Siemens antifreeze water heater - 1pc	set	1
34	The U-shaped 120 metal frame profile for installation	set	2
35	Integrated heat pump compressors -4 pc	set	4
36	Automatic device installed in the heat pump 1pc	set	1
37	External heat pump Xxx kW Mandik- 1pc	set	1
38	External automatic heat pump 1pc	set	1
39	Main fan CK 200 A Ostberg	pcs	2
40	Swirl diffusers Mandik VAPM 315 K / D	pcs	4
41	Swirl diffusers Mandik VAPM 250 K / D	pcs	10
42	Long-range nozzles S 250 DDM Mandik	pcs	4
43	Speakers Mandik 125 TVPM	pcs	8
44	Heat pump water/water – xxxkW	pcs	1
45	2 serpentine boiler 300l	pcs	1
46	Three-way valve with actuator Belimo Du 50	pcs	1

D. ELECTRICAL NETWORKS

№	Works and expenses	M.U.	Amount
1	Cabinet (desktop) of command suspended, height, width and depth, mm, up to 900x600x500	pcs	1
2	Breaker or switcher package in metal casing, mounted on the wall or column construction, quantity of clamps for connecting up to 9, current up to 400 A	pcs	1
3	Current transformer, voltage, kV: 500	set	1
4	Automatic mono-, bi-, tripolar device, mounted on the wall or column construction, electricity up to 250	pcs	1
6	Execution command block of cabinet type or distribution point (cabinet), wall-mounted, height and width, mm 630x320x120 ИПБ - 243 - one 36VXJ13	pcs	1
7	Breaker or switcher package in metal casing, mounted on the wall or column construction, quantity clamps for connecting up to 9, current up to 400 A	pcs	1
8	Automatic mono-, bi-, tripolar, mounted on the wall or column construction, electricity up to 100	pcs	2
9	Automatic mono-, bi-, tripolar, mounted on the wall or column construction, current up to 25 A	pcs	3
10	Bara PE and N	pcs	4
11	Execution command block of cabinet type or distribution point (cabinet), wall-	pcs	1

	mounted, height and width, mm, up to 600x600 (36 modules)		
12	Breaker or switcher package in metal casing, mounted on the wall or column construction, quantity of clamps for connecting up to 9, current up to 400 A	pcs	1
13	Block command execution or distribution point type wardrobe (closet), wall-mounted, height and width, mm, up to 600x600 (72 modules)	pcs	1
14	Breaker or switch package in metal casing mounted on the wall or column construction, quantity clamps for connecting to 9, current up to 400 A	pcs	1
15	Automatic mono-, bi-, tripolar device, mounted on the wall or column construction, current up to 25 A	pcs	38
16	Magnetic starter of common destination, separate, mounted on the wall or column construction, current up to 40 A	pcs	2
17	Execution command block type cabinet or distribution point (cabinet), wall-mounted, height and width, mm, up to 600x600 (18 modules)	pcs	1
18	Breaker or switch pack in metal casing, mounted on the wall or column construction, quantity of clamps for connecting up to 9, current up to 400 A	pcs	1
19	Automatic mono-, bi-, tripolar device, mounted on the wall or column construction, current up to 25 A	pcs	38
20	Magnetic starter of common destination, separate, mounted on the wall or column construction, current up to 100 A	pcs	1
21	Magnetic starter of common destination, separate, mounted on the wall or column construction, current up to 40 A	pcs	2
22	Block command execution or distribution point type wardrobe (closet), wall-mounted, height and width, mm, up to 600x600 (24 modules)	pcs	1
23	Breaker or switch pack in metal casing, mounted on the wall or column construction, quantity of clamps for connecting up to 9, current up to 400 A	pcs	1
24	Automatic mono-, bi-, tripolar device, mounted on the wall or column construction, current up to 25 A	pcs	20
25	Control and signaling device (button, command key, electromagnetic lock padlock, acoustic signal, signal lamp), quantity of ends connected up to: 2	pcs	2
26	Table apparatus: uninterruptible power supply UPS, U _H = 400B, P _H = 10 KBA, t _{work} = 90 min	pcs	1
27	Light fixtures with luminescent lamps separately installed in floors, quantity of lamps, in the light fixture, 1	100 pc	3
28	Light fixture OSIO PIL*Calpest 1x35WFH G5 MODULO SING	pcs	3
29	Housing OSIO PIL* CASSAFORMA 1x35W * MODULO SING.	pcs	3
30	Light fixture with luminescent lamps mounted on separate suspensions (bars), amount of lamps in the light fixture, 1	100 pc	0.02
31	Light fixture OSIO PIL * Calpest 1x28 WFH G5 Modulo FILA	pcs	2
32	Housing OSIO PIL * CASSAFORMA 28W/54W FILA CONTIN	pcs	2
33	Accessory PRESSACAVO M16x1.5 PLASTIC Con Guar	pcs	1
34	Accessory OSIO PIL*COPPIA TEST. CON Cornice FINE LI	pcs	1
35	Accessory OSIO PIL*TESTATE CHIUS. CASSAF. FILA CONT	pcs	1
36	Accessory OSIO PIL*COPPIA TEST. CHIUS. CASSAF. FINE Linea	pcs	1
37	Light fixture for LED lamps with suspension at the installation of steel cable installed	100 pc	0.06
38	Light fixture MARTINO L100*SOSP.LED 25W 23*CR82	pcs	6
39	Light fixture for wall LED lamps with screws for fastening for rooms with normal ambient conditions, monolamp	100 pc	0.03
40	Light fixture MOOVE INDIRETTA HQI 1x70W 230V BIANCO	pcs	3
41	Downlight LED ceiling lamp with screw fastening for rooms with normal ambient conditions, monolampa	100 pc	25
42	Light fixture ROOF POWER LED* QUARDO 4W 3000*K ASIMM	pcs	25
43	Accessory ACC* ALIMENT.150W DC LED ST2 24V (122511)	pcs	1
44	Light fixture for LED lamps in suspended ceilings	100 pc	52
45	Light fixture ESSENTIAL RECESSED*INC.LED 25W 36* CR82	pcs	46

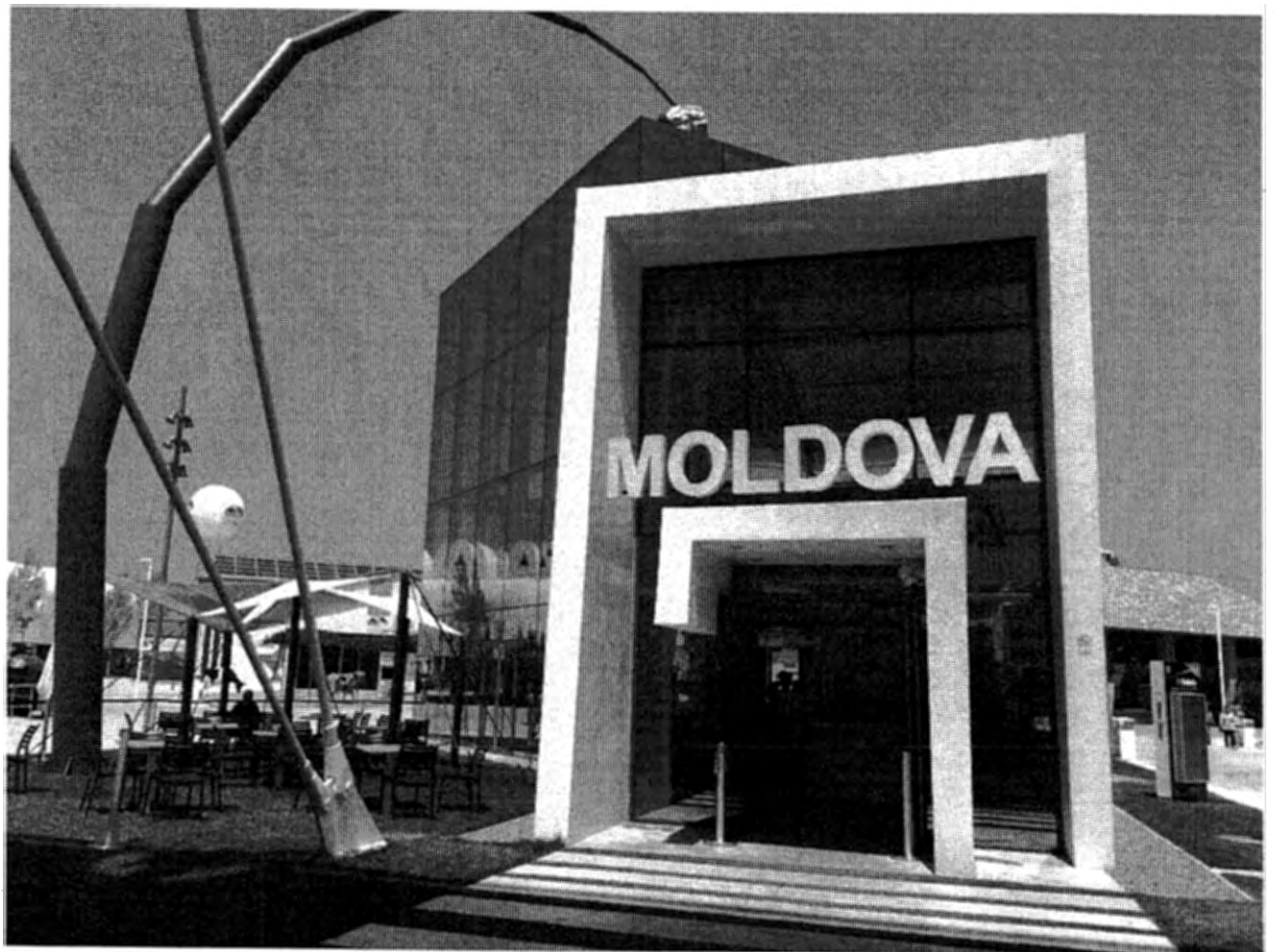
46	Light fixture SET LED*INCASSO TONDO 6W 32* CR82	pcs	6
47	Accessory ACC*ALIMENT.ELETTRON.33W 700MA X LED 25W	pcs	46
48	Accessory ACC*ALIMENT.ELETTRONICO X GM50 700MA	pcs	2
49	Light fixture with LED lamps, lamps amount in the light fixture, 2	100 pc	0.06
50	Corp de iluminat OSIO PIL*CALP. 8 LED RGB IP 67 (RTLRBG)	pcs	1
51	Accessory ACC*ALIMENT.20W OT20/220-240/24V IP20	pcs	4
52	Accessory ACC*ALIMENT.35W LCU035/24V IP20	pcs	2
53	Light fixture installed outside buildings with LED bulbs	pcs	1
54	Light fixture OSIO PIL*CALP. 8 LED RGB IP 67 (RTLRBG)	pcs	1
55	Housing OSIO PIL*CASSAFORMA 14W/24W MODULO SING	pcs	1
56	Light fixture installed outside buildings with LED bulbs	pcs	4
57	Light fixture OSIO PIL*CALP. 12 LED RGB IP 67 (RTLRBG)	pcs	4
58	Housing OSIO PIL*CASSAFORMA 21W/39W MODULO SING.	pcs	4
59	Light fixture installed outside buildings with LED bulbs	pcs	11
60	Light fixture OSIO PIL*CALP. FILA CONT. RGB 12x3W	pcs	11
61	Housing OSIO PIL*CASSAFORMA 21W/39W FILA CONTIN	pcs	11
62	Accessory OSIO PIL*COPPIA TEST. CON Cornice FINE LI	pcs	5
63	Accessory OSIO PIL*TESTATE CHIUS. CASSAF. FILA CONT	pcs	12
64	Accessory OSIO PIL*COPPIA TEST. CHIUS. CASSAF. FINE Linea	pcs	5
65	Projector, mounted separately on steel construction on earth, with a lamp, power, W: 500	100 pc	0.05
66	Light fixture for LED lamps in suspended ceilings	100 pc	0.04
67	Light fixture SET LED IP65*INC. TONDO 18W 101* CR82	pcs	4
68	Accessory ACC*ALIMENT.ELETTR.X 18W 1200MA IP66	pcs	4
69	Command cabinet BZUM-TF-01	pcs	1
70	Current Transformer TTI-A 250/5	pcs	1
71	Execution command block of cabinet type or distribution point (cabinet), wall-mounted, height and width, mm 630x320x120 IIPB - IIM - 24	pcs	1
72	Magnetic starter Uk = 230V, IH = 20A	pcs	1
73	Magnetic starter Uk = 230V, IH = 9A	pcs	3
74	Magnetic starter Uk = 230B, IH = 100A	pcs	1
75	Control device with buttons	pcs	2
76	UPS block UH = 400V, KBA PH = 10, t _{work} = 90 min	pcs	1

E. CONSTRUCTION MATERIALS

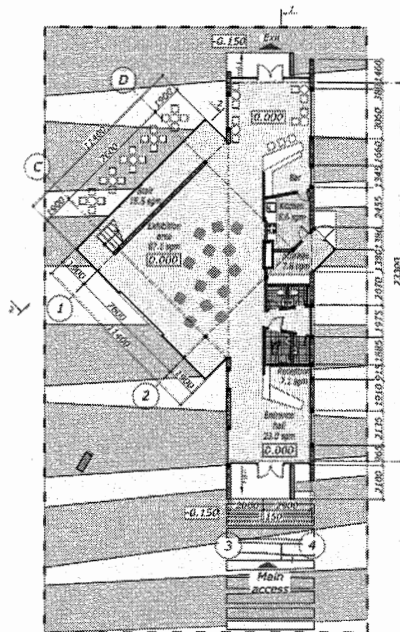
Nº	Works and expenses	M.U.	Amount
1	Steel columns	kg	16054.4
2	Metal beams	kg	7984.5
3	Metal braces	kg	2370.4
4	Metal constructions for the Cube	kg	13151.5
5	Metallic elements (columns, beams, trusses) ready-made, supplied fully assembled, installed on site, in the structure of the lightweight construction	t	39.56
6	Fishing Line (metal support for Sun Flower)	kg	4216.9
7	French windows from the aluminum profiles at the constructions with the height of 35 m of fixed panels mounted at floor level	m2	729
8	Interior wooden doors in a sash, on linings and doors for balcony, including waterproofing and thermal insulation, mounted on the existing constructions frames on constructions with the height of under 35 m (2100x700, 7 pieces)	m2	10.29
9	Interior wooden doors in a sash, on linings and doors for balcony, including waterproofing and thermal insulation, mounted on the existing constructions frames on constructions with the height of under 35 m (2100x900, 3 pieces)	m2	5.67
10	Interior wooden doors in a sash, on linings and doors for balcony, including waterproofing and thermal insulation, mounted on the existing constructions frames	m2	2.1

	on constructions with the height of under 35 m (2100x1000, 1 piece)		
11	Doors made of aluminum profiles, including fittings and accessories required for the doors mounted in the masonry of any kind, at the constructions with the height of up to 35 m inclusive, in a sash, with the frame surface of up to 7 sqm inclusive (2100x900, 1 piece)	m2	2.1
12	Raised removable floors with the module of 600 x 600 mm with the height of 450-800 mm: with pillars of reinforced constructions and struts (with coating layer – linoleum)	m2	170
13	Raised removable floors with the module of 600 x 600 mm with the height of 450-800 mm: with pillars of reinforced constructions and struts (uncoated)	m2	21
14	Straight metal stairs, executed in quantities greater than 50 kg	kg	1424.1
15	Straight ready-made metal stairs, executed in quantities greater than 50 kg	kg	1424.1
17	Windows treated, sanded, polished or secured at mesh of over 1 square meter, including on windows, free steps, with red lead cement and metallic carpentry on metal rods	m2	29.35

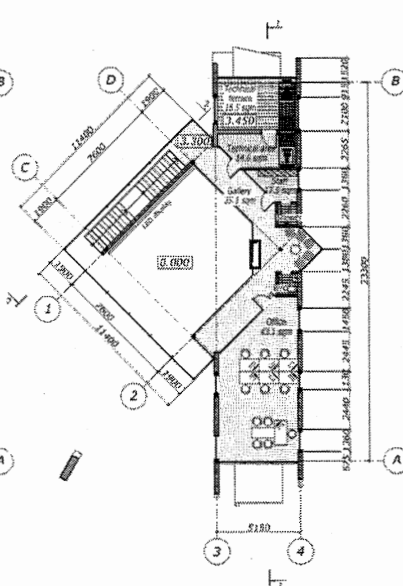




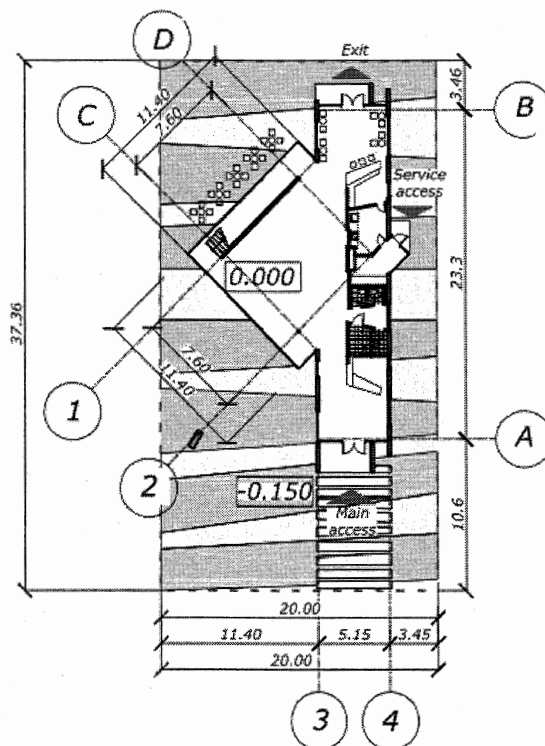
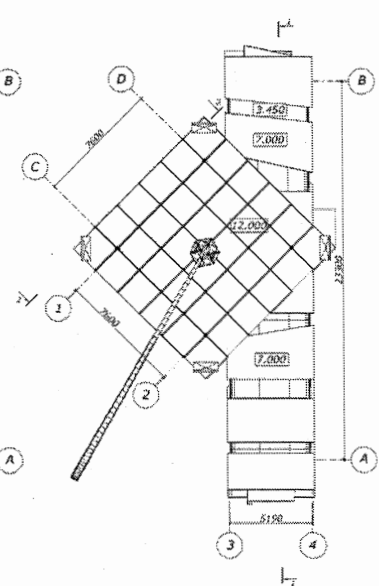
Ground-floor plan scale 1:200



Second-floor plan scale 1:200



Roof plan scale 1:200



Suprafata teren: 747 mp
Suprafata cladirii: 305 mp inclusiv:
parter: 202 mp
etaj: 103 mp

Section 1 - 1 scale 1:200

